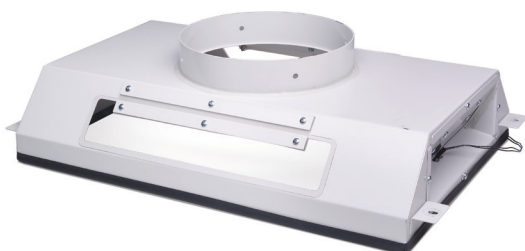


# Logic<sup>®</sup> Class II Biosafety Cabinets

## Filters, Ductwork, Blowers & Typical Exhaust System



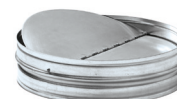
**Ventus Canopy Connection.** For thimble exhausting Type A2 cabinets. Canopy provides air gap allowing room air to enter the ductwork and mix with the filtered air being exhausted to the outside. Detects insufficient exhaust in less than one second and signals LCD to show an alarm. Alarm increases motor to maximum speed for personal safety. Adds only 1.25" to cabinet height. Powder-coated steel. Collar is 10" (25.4 cm) ID. **Exhaust connection is required. Damper (3776800) and Remote Blower (7068000 or 7068200) are recommended (not included).** Contact Labconco for information on factory installation. Shipping weight 60 lbs. (27 kg)

Catalog Number	For Use With	Total Exhaust Volume (CFM) (Cabinet & Room Air)		
		8" Sash Opening	9" Sash Opening	10" Sash Opening
3889200	3' Type A2	253-323	278-351	303-379
3889201	4' Type A2	319-396	354-433	389-470
3889202	5' Type A2	386-470	428-516	470-562
3889203	6' Type A2	453-543	503-598	553-654

**3776800—Air-Tight Damper.** Mounts atop Ventus Canopy to adjust exhaust airflow and closes for decontamination procedures. Manually adjustable. Type 304 stainless steel. 10" (25.4 cm) high with 10" (25.4 cm) dia. OD inlet & outlet. Shipping weight 13 lbs. (6 kg)



**3858800—Backdraft Damper.** Mounts in vertical duct run to prevent reverse pressurization of the exhaust system. 3.0" (8 cm) high with 10" (25.4 cm) dia. OD inlet and outlet. Shipping weight 5.0 lbs. (2.0 kg)



**Remote Blowers. Required for Type B2 and recommended for canopy-ducted Type A2.** Phenolic-coated impeller and housing, powder-coated steel base and weather cover, belt-drive motor with adjustable sheave and self-adjusting gravity belt tightener. Contact Labconco for dimensions and blowers of other sizes and electrical configurations.



Catalog Number	For Use With	Electrical Requirements	HP	Shipping Weight
7068000	3' & 4' Type A2	115V, 60 Hz, 1 phase, 4.0A	1/6	92 lbs. (42 kg)
7068200	5' & 6' Type A2	115V, 60 Hz, 1 phase, 4.4A	1/4	92 lbs. (42 kg)
7071900	4' & 6' Type B2	230/460V, 60 Hz, 3 phase, 5.8/2.9A	2	100 lbs. (45 kg)

### Blower Dimensions

	7068000 & 7068200	7071900
Inlet	10.87" (27.6 cm) ID	12.25" (31.1 cm) OD
Outlet	10.0" w x 5.5" d (14 x 25 cm)	13.5" w x 7.0" d (18 x 34 cm)
Blower Transition Adapter Required	4722401	7003400

### Typical Cabinet Exhaust System

**Zero Pressure Weathercap**  
7095100, 10" dia. or 5622100, 12" dia.

**Thermoplastic Duct**  
7027200, 10" dia. or 5602000, 12" dia.

**Duct Reducer** 5606100, 10" x 12" dia.

**Flexible Duct Connection** 7034200, 11" dia.

**90° Elbow** 7027300, 10" dia.

**Air-Tight Damper** (included with Type B2 and accessory for Canopy-ducted Type A2)

**Backdraft Damper** 3858800, 10" dia.

**Blower Transition Adapter**  
4722401, 10" dia.  
7003400, 12" dia.

**Remote Blower**

**Male Duct Coupling** 7067300, 12" dia.

**Canopy Connection** (Type A2 only) or  
**Hard Duct Connection** (Type B2 only)

**Contact Labconco for ordering information and technical assistance in selecting the right ductwork for your installation.**

