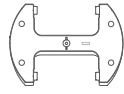
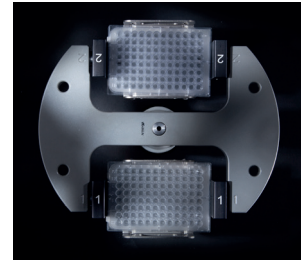


## — SWING-OUT ROTOR, 2-PLACE | 1460



<b>Rotor</b>	
max. RPM   max. RCF	4,000 min <sup>-1</sup>   2,218
max. capacity	10 plates
run-up   run-down, braked in sec	40   45
angle   max. noise level	90°   55 dB (A)
temperature in °C <sup>1)</sup>	-6
<b>Cat. No.</b>	<b>1460</b>



<b>Vessels</b>										
capacity in ml	-	-	-	-	-	-	-	-	-	0,2
W x D x H in mm	128x86x15	128x86x17.5	128x86x22	128x86x44.5	128x86x46	128x86x83	84x59x11	124x82x20	-	-
max. RCF <sup>2)</sup>	2,218	2,218	2,218	2,218	2,218	2,218	2,218	2,218	2,218	2,218
radius in mm	124	124	124	124	124	124	124	124	124	124
<b>Cat. No.</b>	<b>MTP</b>	<b>MTP</b>	<b>CP</b>	<b>DWP</b>	<b>MS</b>	<b>QP</b>	<b>Microtest plates</b>	<b>PCR plate, 96 wells</b>	<b>PCR strips</b>	
<b>+</b>										
<b>Bucket</b>										
boring Ø x L in mm	-	-	-	-	-	-	-	-	-	-
vessels per rotor	10	8	6	2	2	2	4	2	24 x 8	
<b>Cat. No.</b>	<b>1453-A</b>	<b>1453-A</b>	<b>1453-A</b>	<b>1453-A</b>	<b>1453-A</b>	<b>1453-A</b>	<b>1453-A</b>	<b>1453-A + 1485</b>	<b>1453-A + 1485</b>	

## — SWING-OUT ROTOR, 24-PLACE | 1555



<b>Rotor</b>	
max. RPM   max. RCF	13,000 min <sup>-1</sup>   18,327
max. capacity	24 x 2 ml
run-up   run-down, braked in sec	36   31
angle	90°
temperature in °C <sup>1)</sup>	3
<b>Cat. No.</b>	<b>1555</b>

Lid bioseal<sup>®</sup>, phenol-resistant



**Cat. No.** **INCLUSIVE**



<b>Vessels</b>						
capacity in ml	0.2	0.4	0.5	0.8	1.5	2
Ø x L in mm	6x18	6x45	8x30	8x45	11x38	11x38
max. RCF <sup>2)</sup>	18,327	18,327	18,327	18,327	18,327	18,327
radius in mm	97	97	97	97	97	97
<b>Cat. No.</b>	<b>microliter tubes</b>					
<b>+</b>						
<b>Adapter</b>						
boring Ø x L in mm	6x40	6x40	8x40	8x40	10.2x19.3	11.5x38.5
vessels per rotor	24	24	24	24	24	24
<b>Cat. No.</b>	<b>2024</b>	<b>2024</b>	<b>2023</b>	<b>2023</b>	<b>2031<sup>7)</sup></b>	<b>-</b>

1) For cooled versions: Lowest temperature achievable with precooling and max. speed.  
 2) Please note that the RCF values indicated refer only to rotor performance. The max. permissible RCF of tubes used should be verified with the individual manufacturers. The max. RCF for glass tubes annotated with footnote 2) is 4,000.  
 5) Tested by TÜV in conformity with DIN EN 61010, section 2 - 020.  
 7) For centrifugation at high speeds, we recommend to use conical, phenol-resistant adapters. Cat. No. 2031.